



# MONTHLY STATISTICAL REPORT

John Davis, Executive Director

## FIELD OPERATIONS PROGRAMS

Month: January 2016 Date Released: 03/15/2016

TEMPORARY ASSISTANCE FOR NEEDY FAMILIES <sup>1</sup>								
MONEY PAYMENT					Net Change From: December 2015			
	GRANT	ZERO GRANT	ONE-MONTH SUSPEND TANF	AVERAGE GRANT	GRANT	ZERO GRANT	ONE-MONTH SUSPEND TANF	AVERAGE GRANT
Families	6,080	6	16	\$137.40	-247	-35	8	\$0.06
Recipients	12,125	11	29	\$68.90	-579	-79	12	\$0.50
Adults	2,680	5	9		-187	-24	1	
Children	9,445	6	20		-392	-55	11	
TOTAL GRANT AMOUNT		\$835,422			-\$33,499			

SUPPLEMENTAL NUTRITION ASSISTANCE PROGRAM (SNAP)				
			Net Change From: December 2015	
	NUMBER	AVERAGE BENEFIT VALUE	NUMBER	AVERAGE BENEFIT VALUE
Households	287,972	\$251.33	-5,058	-\$1.59
Persons	611,523	\$118.36	-10,248	-\$0.84
BENEFIT VALUE	\$72,377,053		-\$1,736,742	
COST PER MEAL	\$1.27		-\$0.01	

TANF AND SNAP COLLECTIONS		
	AMOUNT	Net Change From: December 2015
TANF/AFDC Overpayment Collections	\$2,118	\$346
SNAP Overissuance Collections	\$267,492	\$29,715

<sup>1</sup> Total TANF program [TANF-Basic and TANF-Unemployed Parent (UP)]. Totals include UP data: 2 cases, 6 recipients, \$322 grant amount.

<sup>2</sup> Cases eligible for a money payment, but not legally entitled to a check because of \$10 minimum payment.

Prepared by Research and Statistics Unit, Division of Budgets and Accounting.



# MONTHLY STATISTICAL REPORT FIELD OPERATIONS PROGRAMS

Month: January 2016      Date Released: 03/15/2016

CHILD SUPPORT CASELOAD DATA		
	CASES	Net Change From: December 2015
TOTAL	324,386	-1,915
TANF/Foster Care	10,953	-126
Non-TANF	286,840	-1,775
TANF/Foster Care Arrears Only	24,414	-8
Non-IV-D	2,179	-6

NONCUSTODIAL PARENTS LOCATED		
	NUMBER	Net Change From: December 2015
TOTAL	6,082	318
TANF/Foster Care Arrears Only	390	3
Non-TANF	5,692	315

CASES WITH COLLECTIONS		
	NUMBER	Net Change From: December 2015
TOTAL CASES	80,224	-1,042

TOTAL CHILD SUPPORT COLLECTIONS		
	AMOUNT	Net Change From: December 2015
COLLECTED	\$25,816,512	-\$379,014

Prepared by Research and Statistics Unit, Division of Budgets and Accounting.



# MONTHLY STATISTICAL REPORT FAMILY AND CHILDREN'S SERVICES

Month: January 2016    Date Released: 03/15/2016

CHILD ABUSE/NEGLECT REPORTS INVESTIGATED STATEWIDE <sup>1</sup>		
Number Investigated	Net Change From: December 2015	Net Change From: January 2015
1,818	-428	201

<sup>1</sup> Tentative figures.

FINALIZED ADOPTIONS <sup>1</sup>		
Number	Net Change From: December 2015	Net Change From: January 2015
10	(5) <sup>2</sup>	2

<sup>1</sup> Finalized adoptions accumulated July 2015 - January 2016 were 205.

<sup>2</sup> Difference reflects corrected December figure.

ADOPTION ASSISTANCE PROGRAM			
RECIPIENTS	AMOUNT	Net Change From: December 2015	
		RECIPIENTS	AMOUNT
2,919	\$1,369,401.30	0	-\$38,696.41

PRIMARY SERVICE RECIPIENTS	
NUMBER	Net Change From: December 2015
13,015	2,675

FOSTER HOME BOARD PAYMENT DATA						
	CHILDREN	HOMES	BOARD PAYMENTS	Net Change From: December 2015		
				CHILDREN	HOMES	BOARD PAYMENTS
TOTAL	2,732	1,305	\$2,074,299.87	18	21	-\$3,202.75
Title IV-E	946	346	\$708,421.35	43	23	\$46,273.83
Title IV-B	1,786	959	\$1,365,878.52	-25	-2	-\$49,476.58

<sup>1</sup> Total payment amount includes contract facilities.

Prepared by Research and Statistics Unit, Division of Budgets and Accounting.

# Mississippi Department of Human Services

## Graphic Overview of Program Data

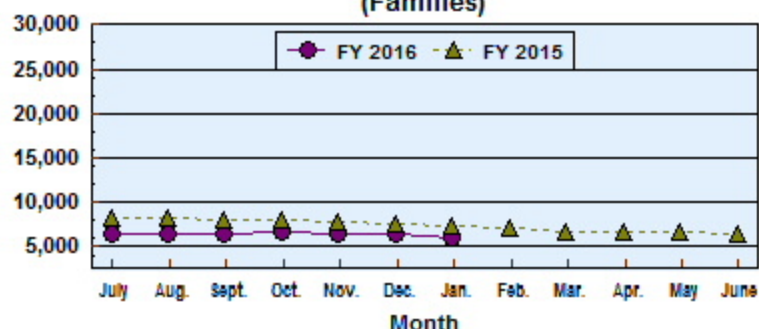
Month: January 2016

Field Operations Programs

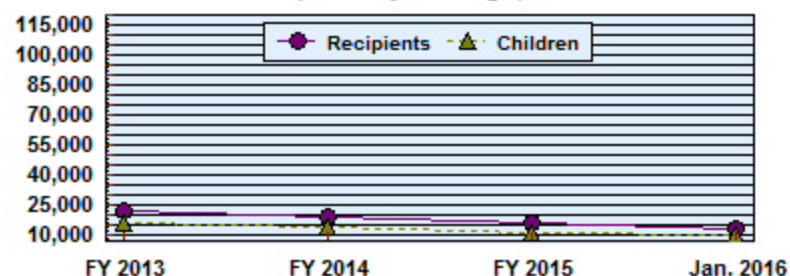
Date Released: 03/15/16

### Temporary Assistance for Needy Families

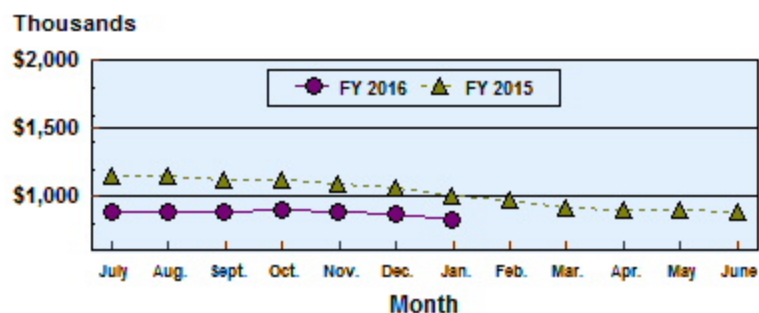
**TANF MONEY PAYMENT CASELOAD (Families)**



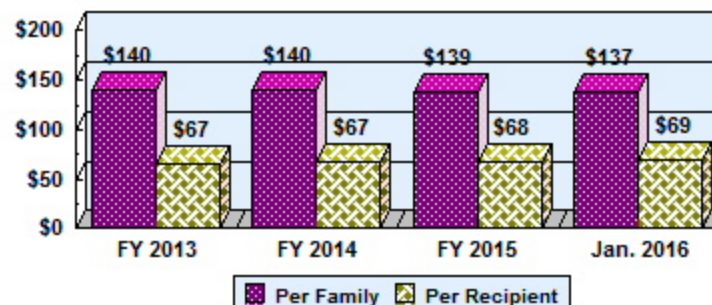
**TANF MONEY PAYMENT RECIPIENTS AND CHILDREN (Monthly Average)**



**TANF MONEY PAYMENTS TO RECIPIENTS**



**TANF AVERAGE MONTHLY GRANT**



# Mississippi Department of Human Services

## Graphic Overview of Program Data

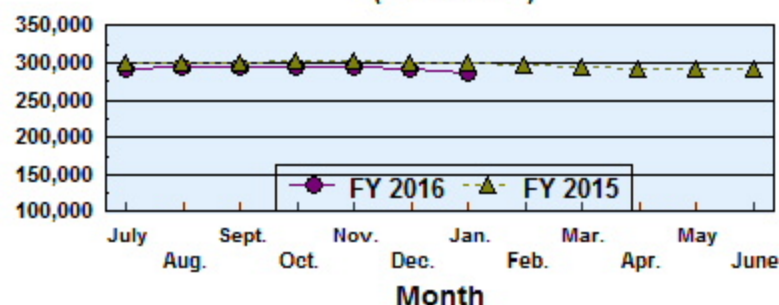
Date Released: 03/15/16

Month: January 2016

### Field Operations Programs

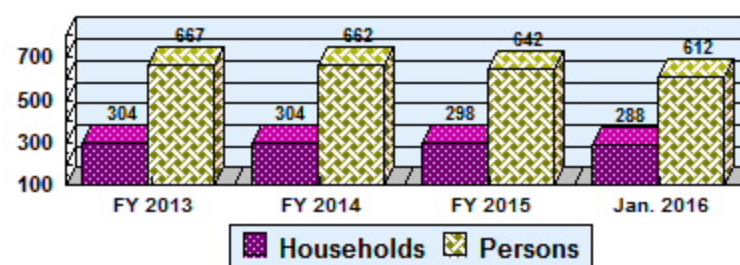
### Supplemental Nutrition Assistance Program (SNAP)

**SNAP CASELOAD**  
(Households)

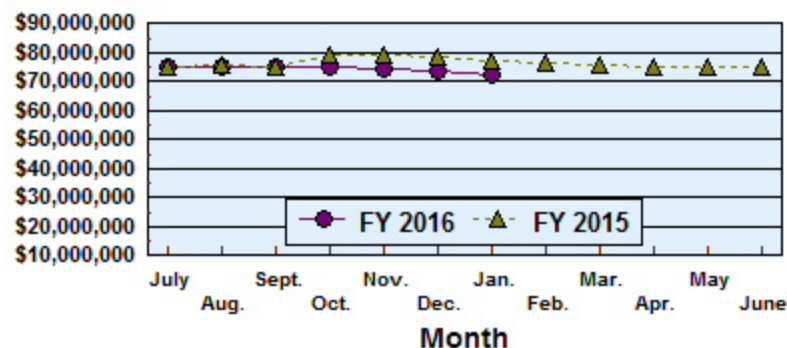


**SNAP HOUSEHOLDS AND PERSONS**  
(Monthly Average)

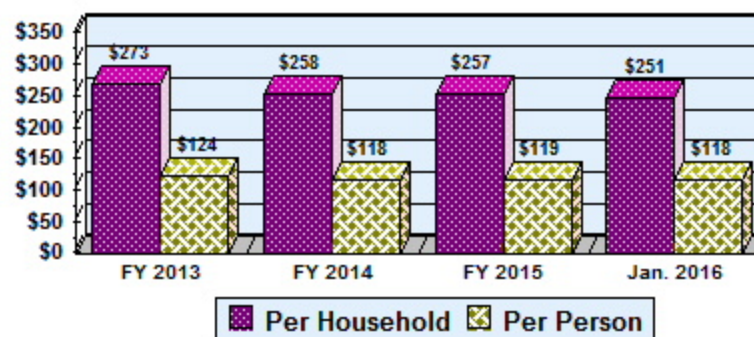
In Thousands



**VALUE OF SNAP BENEFITS**



**AVERAGE MONTHLY VALUE OF SNAP BENEFITS**

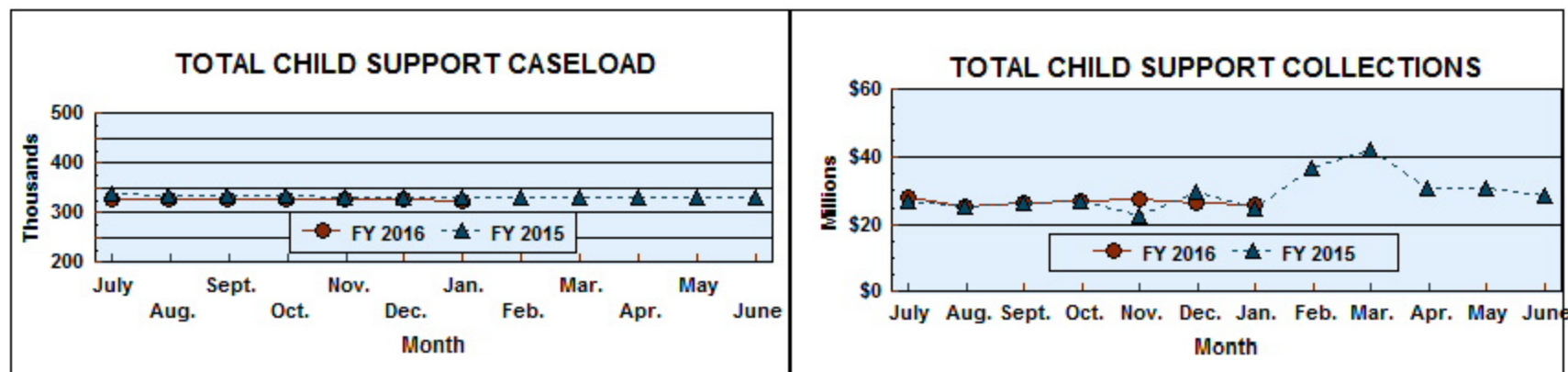


# Mississippi Department of Human Services Graphic Overview of Program Data

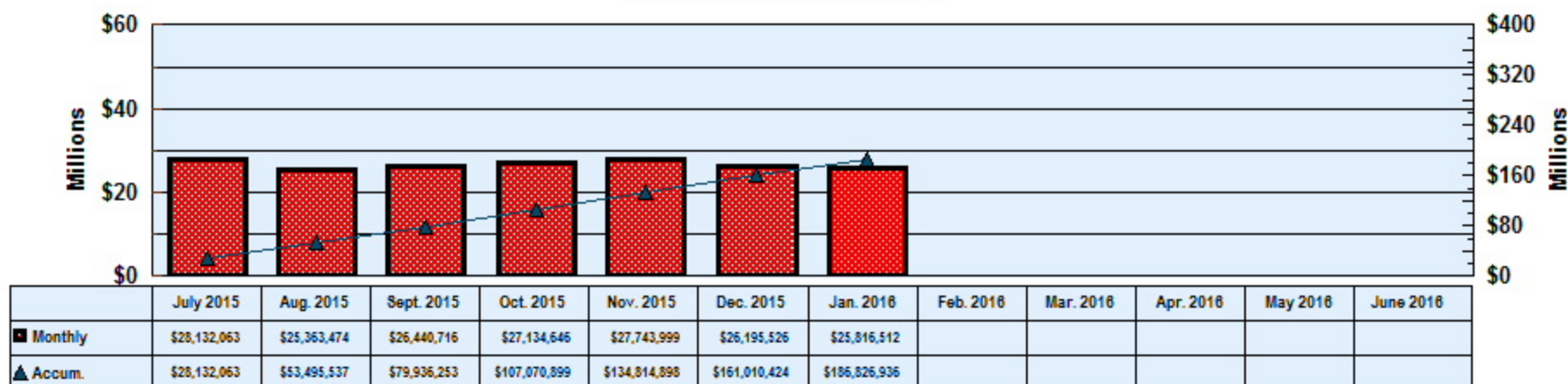
Month: January 2016

Date Released: 03/15/16

## Field Operations Programs Child Support Enforcement Program



## FY 2016 TOTAL COLLECTIONS (ACCUMULATED MONTHLY)



Prepared by Research and Statistics Unit, Division of Budgets and Accounting.



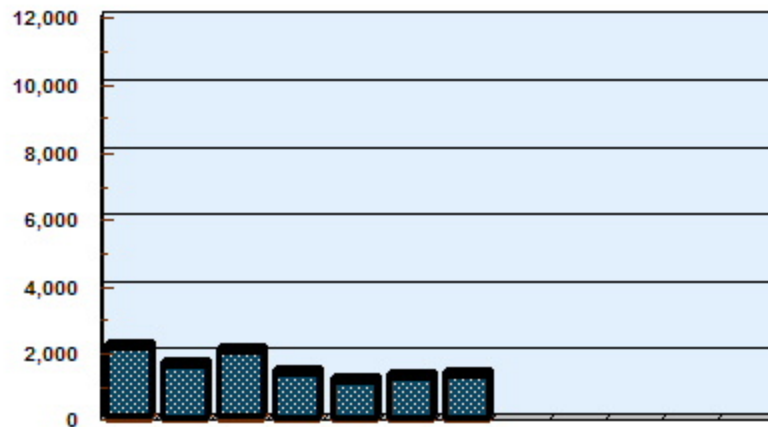
**Mississippi Department of Human Services  
Graphic Overview of Program Data**

Month: January 2016

Date Released: 03/15/16

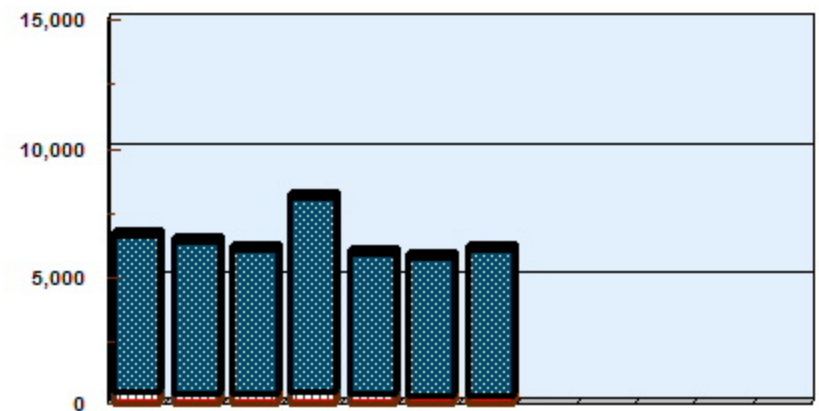
**Field Operations Programs  
Child Support Enforcement Program**

**NUMBER OF CHILDREN FOR WHOM  
PATERNITY WAS ESTABLISHED**



	07/15	08/15	09/15	10/15	11/15	12/15	01/16	02/16	03/16	04/16	05/16	06/16
TANF	130	103	121	93	80	72	90					
Non-TANF	2,033	1,550	1,977	1,321	1,108	1,226	1,234					

**NONCUSTODIAL PARENTS LOCATED**



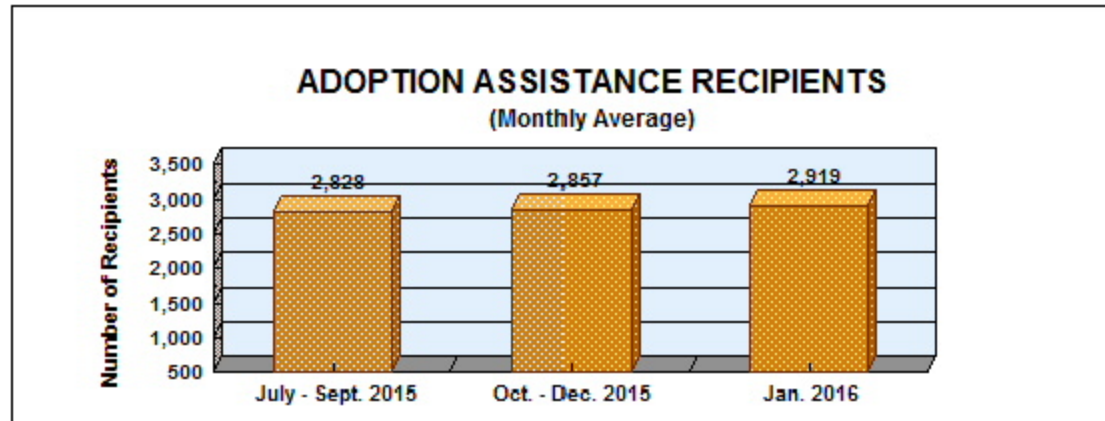
	07/15	08/15	09/15	10/15	11/15	12/15	01/16	02/16	03/16	04/16	05/16	06/16
TANF	473	458	453	538	434	387	390					
Non-TANF	6,169	5,949	5,642	7,618	5,488	5,377	5,692					

**Mississippi Department of Human Services  
Graphic Overview of Program Data**

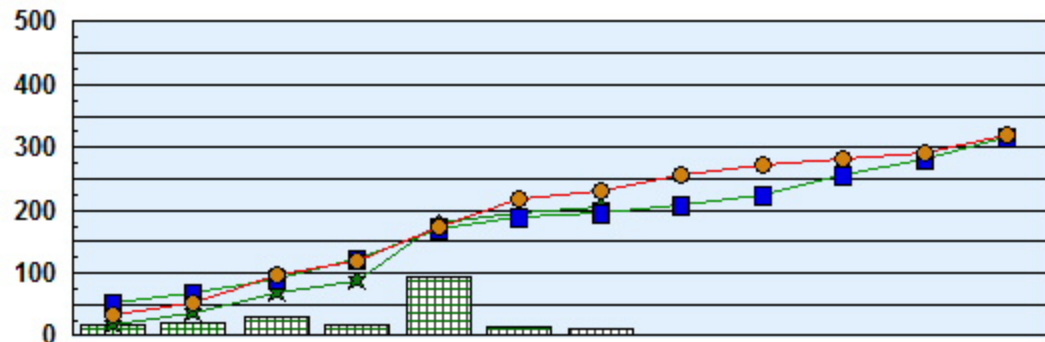
Month: January 2016

Date Released: 03/15/16

**Family and Children's Services**



**NUMBER OF FINALIZED ADOPTIONS**  
FISCAL YEARS 2014 - 2016



	July	Aug.	Sept.	Oct.	Nov.	Dec.	Jan.	Feb.	Mar.	Apr.	May	June
No. finalized ea. mo. in FY16	16	20	31	19	94	15	10					
Accumulated # finalized in FY16	16	36	67	86	180	195	205					
Accumulated # finalized in FY15	54	70	90	123	170	188	196	208	223	255	281	318
Accumulated # finalized in FY14	32	52	96	120	173	218	232	256	271	281	290	320

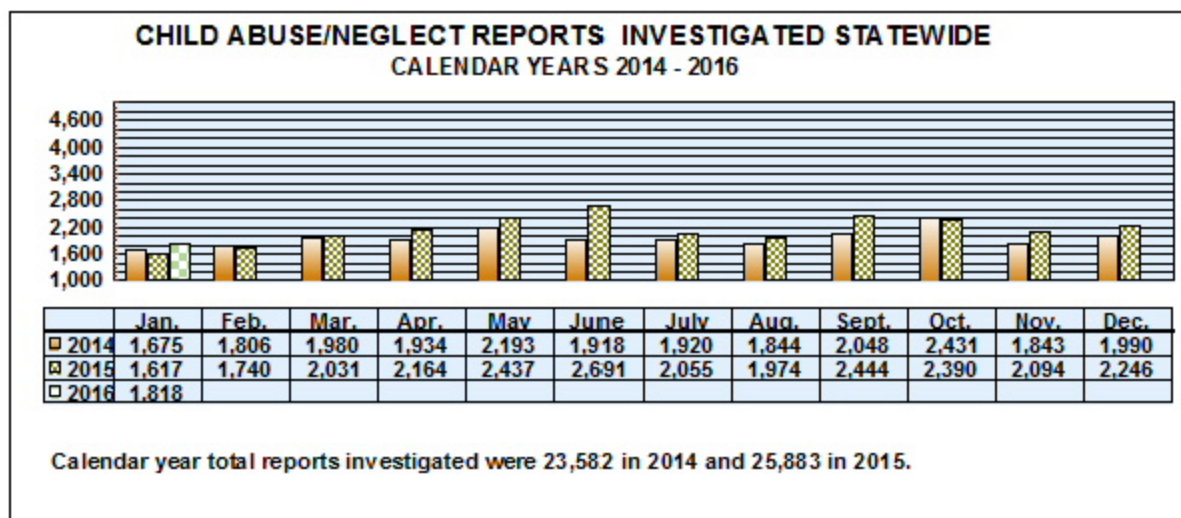
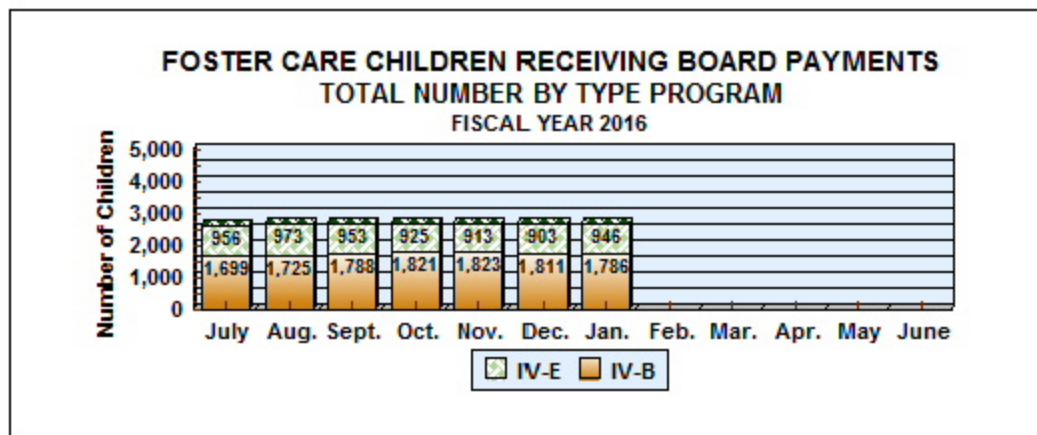


# Mississippi Department of Human Services Graphic Overview of Program Data

Month: January 2016

Date Released: 03/15/16

## Family and Children's Services

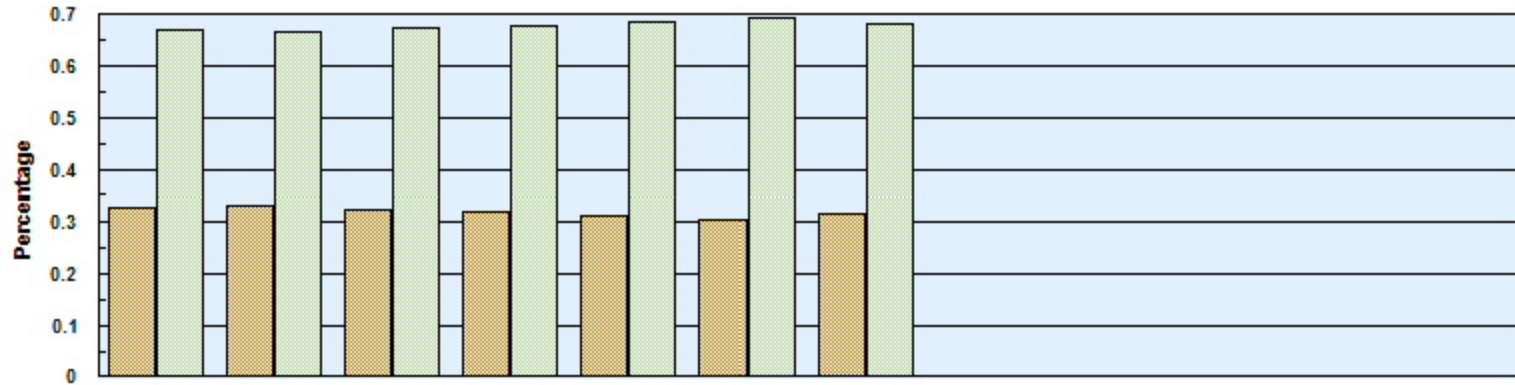


**Mississippi Department of Human Services  
Monthly IV-E/IV-B Penetration Rate**

Month: January 2016

Date Released: 03/15/16

**Family and Children's Services**



	July 2015	Aug. 2015	Sept. 2015	Oct. 2015	Nov. 2015	Dec. 2015	Jan. 2016	Feb. 2016	Mar. 2016	Apr. 2016	May 2016	June 2016
IV-E	0.32976	0.33218	0.32403	0.3216	0.3121	0.30545	0.31604					
IV-B	0.67024	0.66782	0.67597	0.6784	0.6879	0.69455	0.68396					

Prepared by Research and Statistics Unit, Division of Budgets and Accounting.

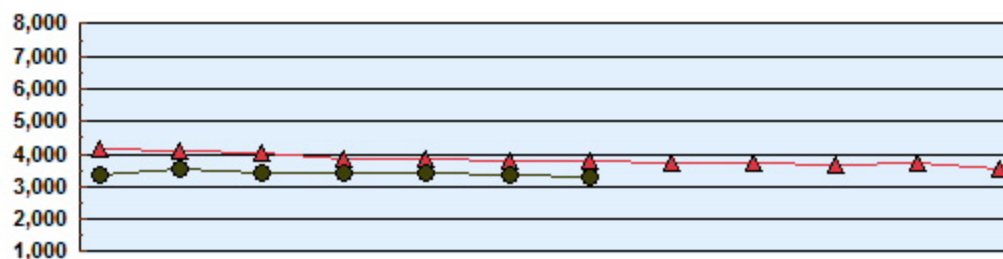
Month: January 2016

## Mississippi Department of Human Services Graphic Overview of Program Data

Date Released: 03/15/16

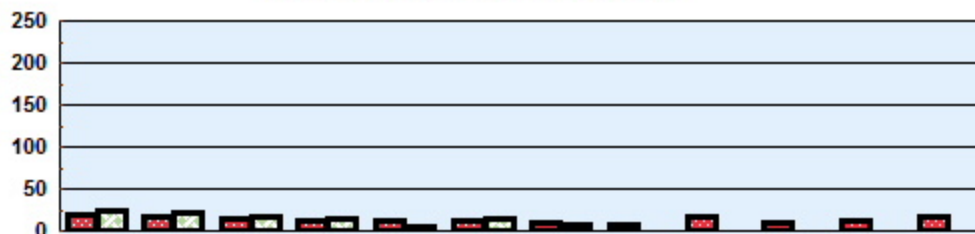
### Division of Youth Services

#### COMMUNITY SERVICES CASELOAD



	July	Aug.	Sept.	Oct.	Nov.	Dec.	Jan.	Feb.	Mar.	Apr.	May	June
▲ FY 2015	4,159	4,113	4,060	3,883	3,869	3,808	3,768	3,725	3,736	3,642	3,703	3,562
● FY 2016	3,373	3,545	3,450	3,433	3,407	3,346	3,288					

#### TRAINING SCHOOL ADMISSIONS



	July	Aug.	Sept.	Oct.	Nov.	Dec.	Jan.	Feb.	Mar.	Apr.	May	June
■ FY 2015	21	18	15	12	12	14	11	8	18	10	12	19
■ FY 2016	26	23	18	15	7	16	8					

# Mississippi Department of Human Services

## Graphic Overview of Program Data

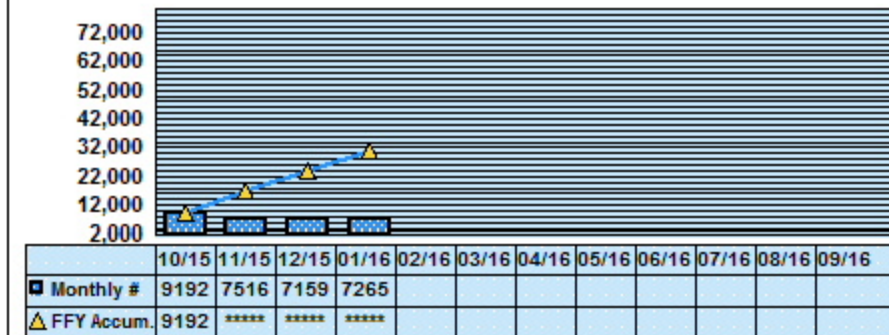
Month: January 2016

Social Services Block Grant

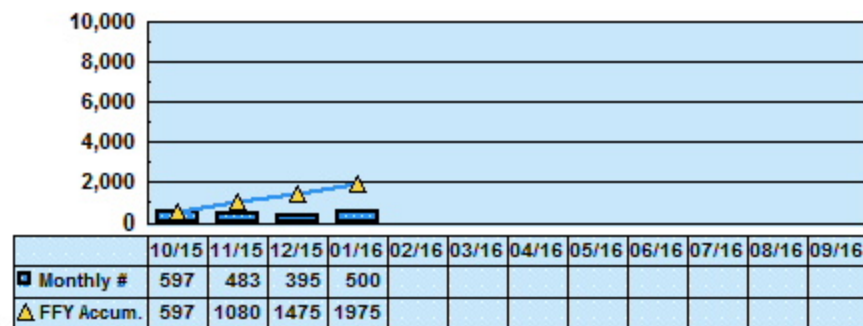
Date Released: 03/15/16

### NEW CLIENTS SERVED FEDERAL FISCAL YEAR 2016\*

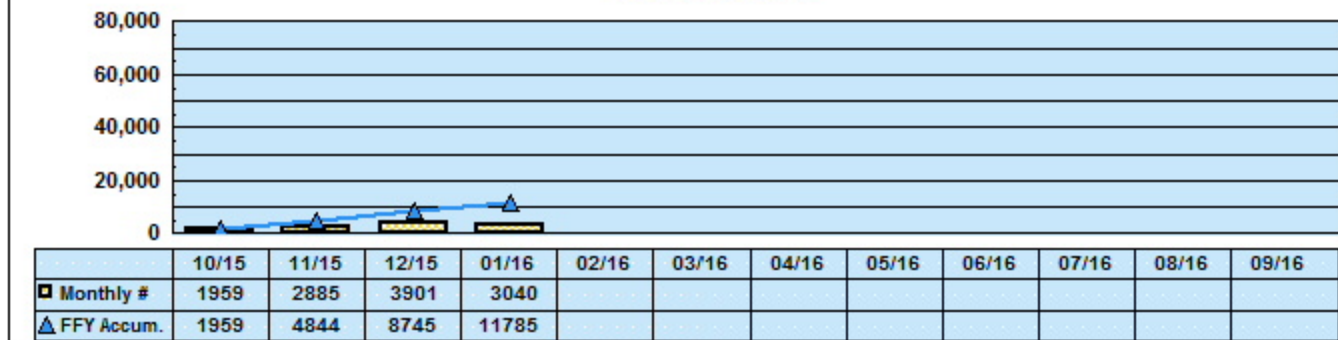
Division of Family and Children's Services  
Children Served



Division of Youth Services  
Children Served



Division of Aging and Adult Services  
Adults Served



\*Reflects unduplicated count of clients served monthly.

\*\*Data unavailable.

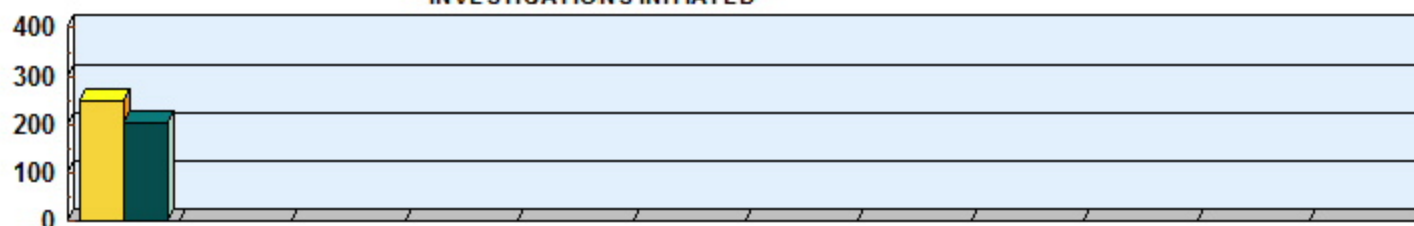
**Mississippi Department of Human Services  
Graphic Overview of Program Data**

Month: January 2016

Date Released: 03/15/16

**Division of Aging and Adult Services  
ADULT PROTECTIVE SERVICES**

**MONTHLY INTAKES FOR INVESTIGATIONS  
and  
INVESTIGATIONS INITIATED\***



Monthly Data	Jan.	Feb.	Mar.	Apr.	May	June	July	Aug.	Sept.	Oct.	Nov.	Dec.
Intakes for Investigation	249											
Investigations Initiated	204											

**ACCUMULATED INTAKES FOR INVESTIGATIONS  
and  
INVESTIGATIONS INITIATED**



Accumulated Data	Jan.	Feb.	Mar.	Apr.	May	June	July	Aug.	Sept.	Oct.	Nov.	Dec.
Intakes for Investigation	249											
Investigations Initiated	204											

\*An approximate manual count.

Prepared by Research and Statistics Unit, Division of Budgets and Accounting.