



Tuesday, July 24, 2018

Has the move-in date been changed? It doesn't address it in the addendum.

No, it has not changed.

Great – January 1st it will be

Friday, July 27, 2018

Is there a set of plans from y'all's old space (State Street Office) that I can view to see how the breakup of open type space versus office type space? Is there any preference to an open plan for any/all parts of the space?

Attached are the floor plans for the 750 North State Street Building.



750 N State St Blue
Prints.pdf

Is/was there anything about this layout that did not work?

Yes, there were the following issues:

The building was originally a hotel and the offices were either too large or too small due to the rectangular hotel rooms.

Security was a concern because of the multiple entrances to each floor.

The lobby was constrained due to elevator placement.

Thursday, August 2, 2018

Could you provide me with a list of the powered gym equipment?

Here is a list of the powered gym equipment.

3 –Treadmills

3 – Ellipticals

2 – Power Bikes

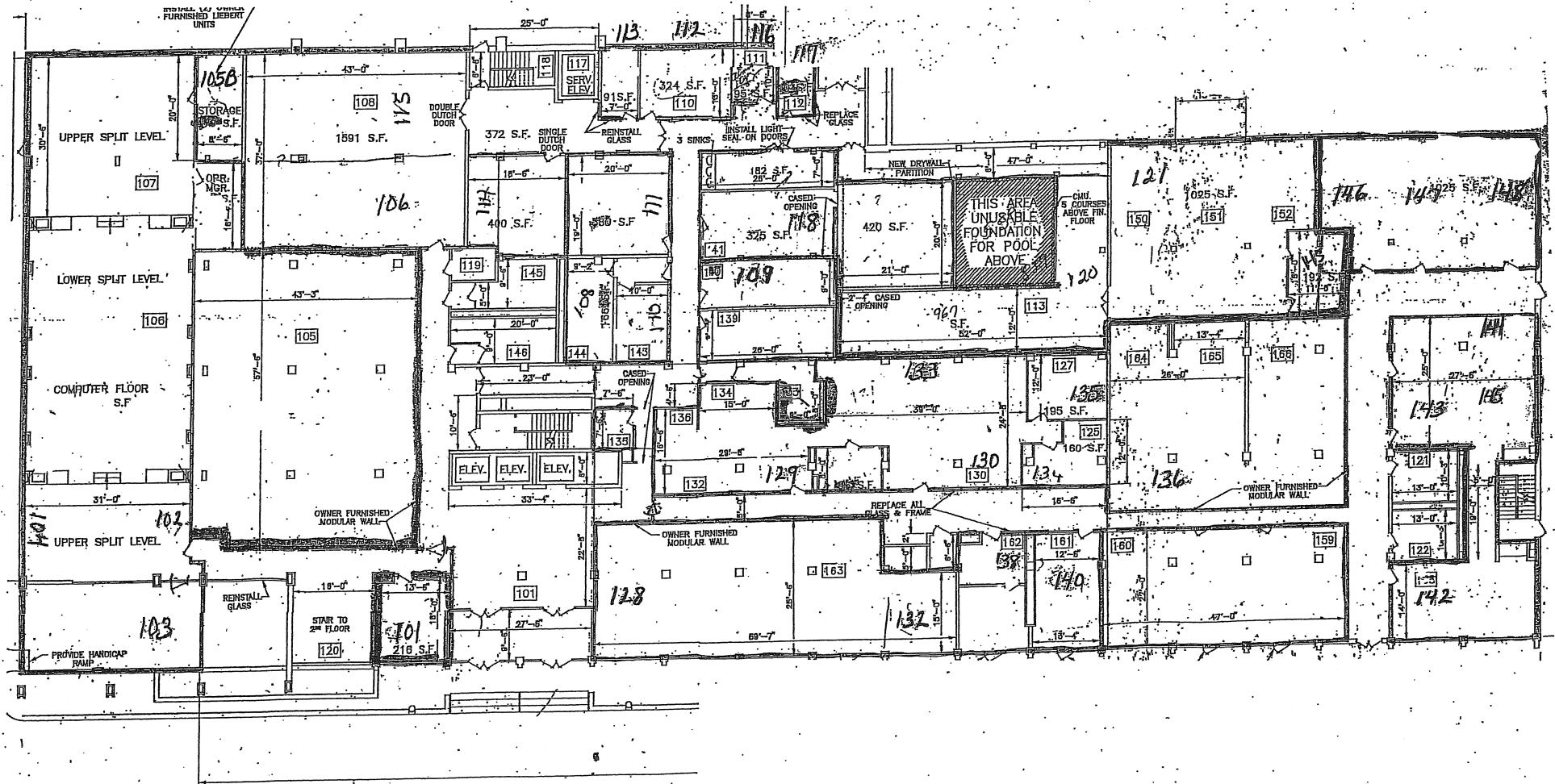
Also has sound system and computer.

Mississippi Department of Human Services

750 North State St.

Jackson, MS 39205

1st Floor



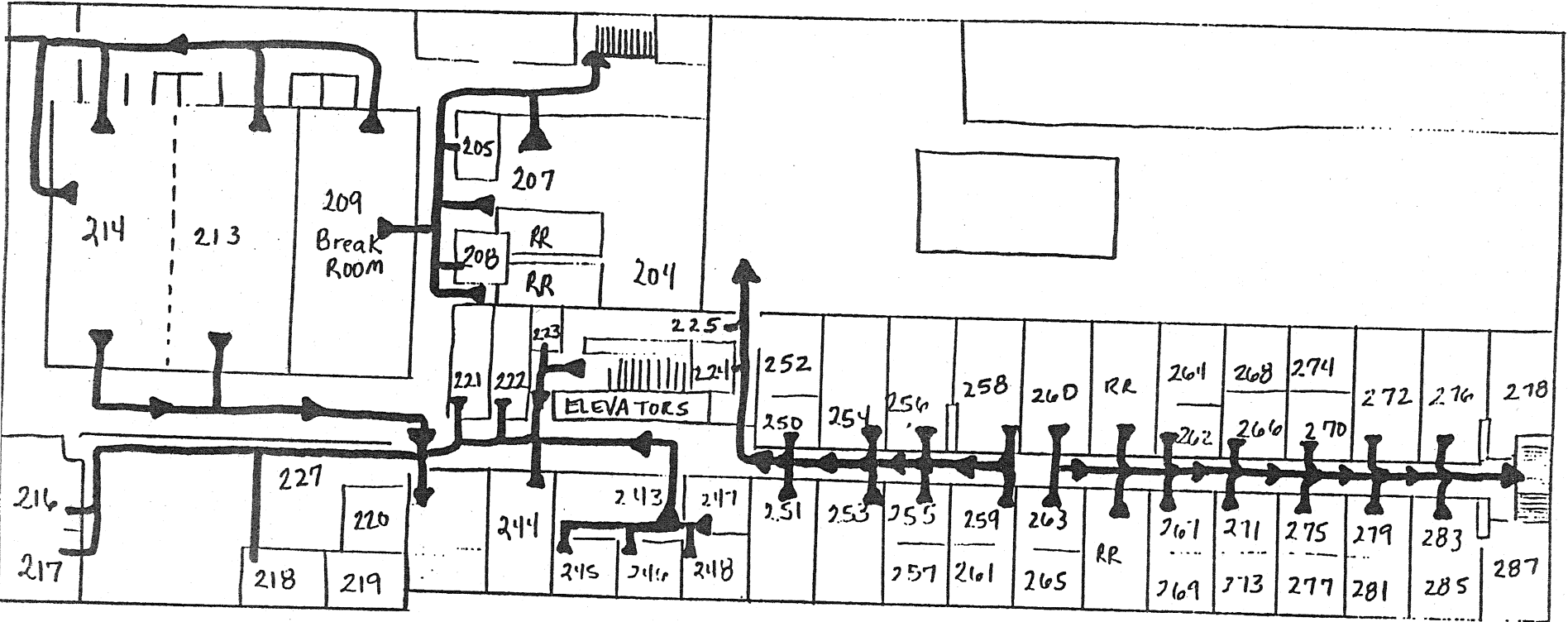
2nd Floor

N
↑

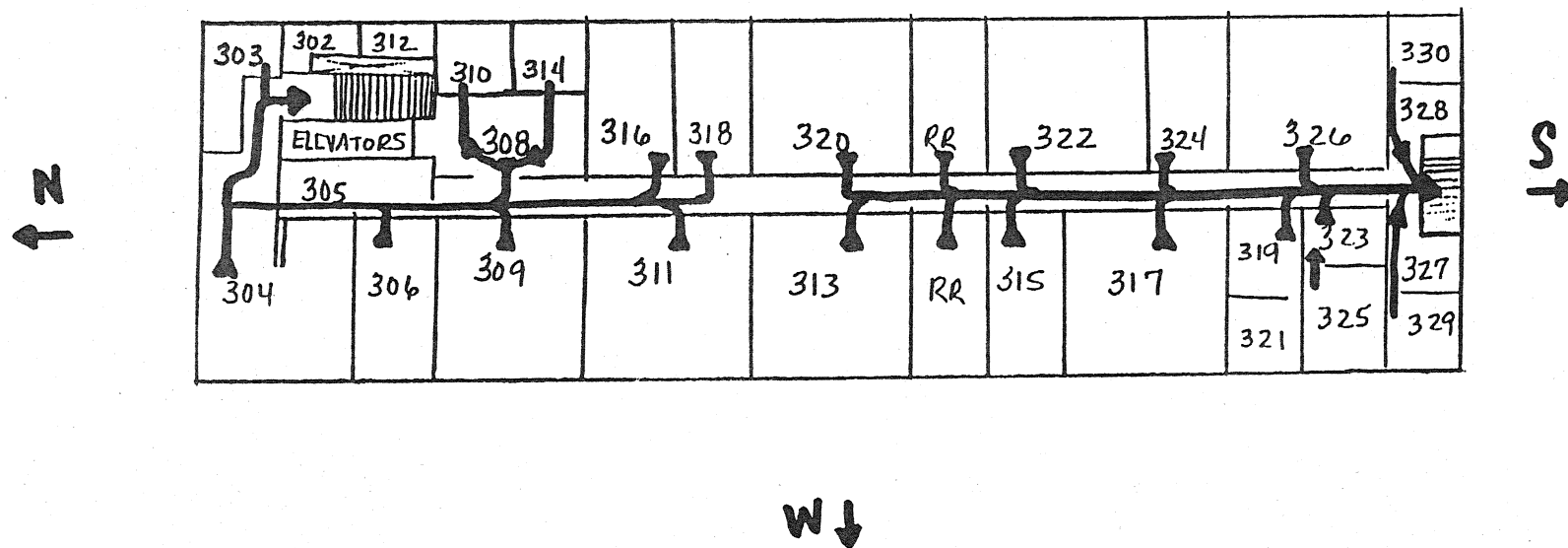
E
↑

S
→

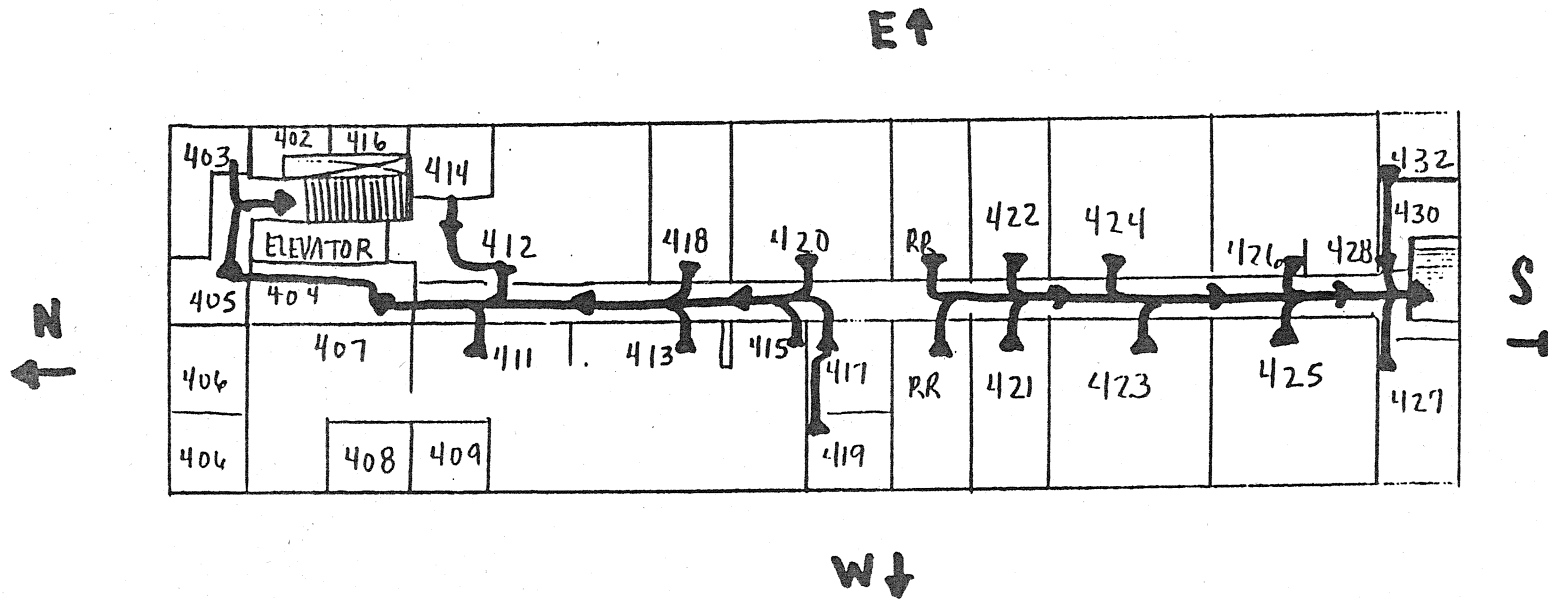
W
↓



E ↑



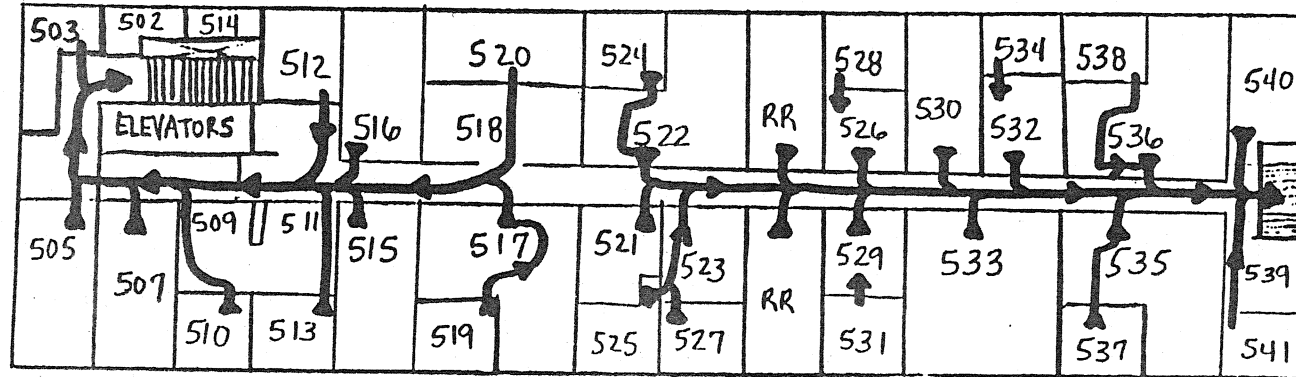
4th Floor



5th Floor

E↑

N
←

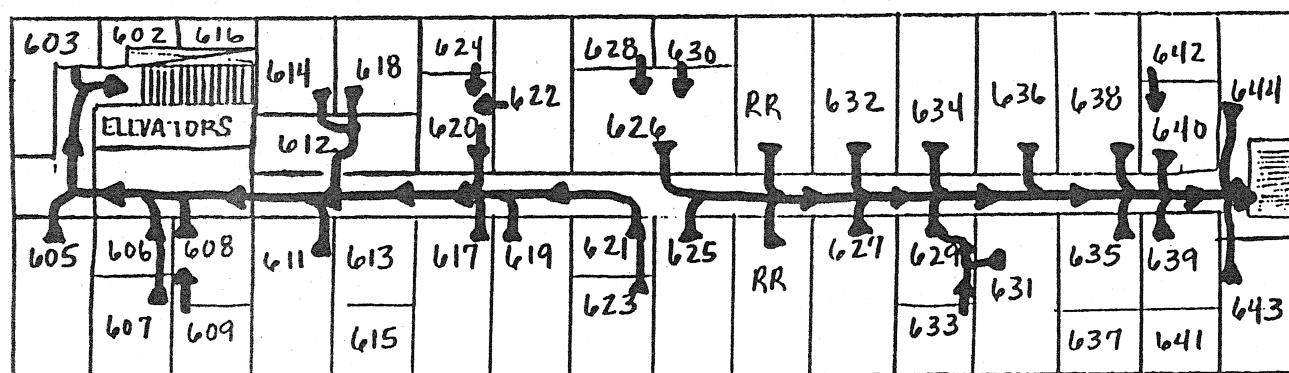


S
→

W↓

6th Floor

E↑

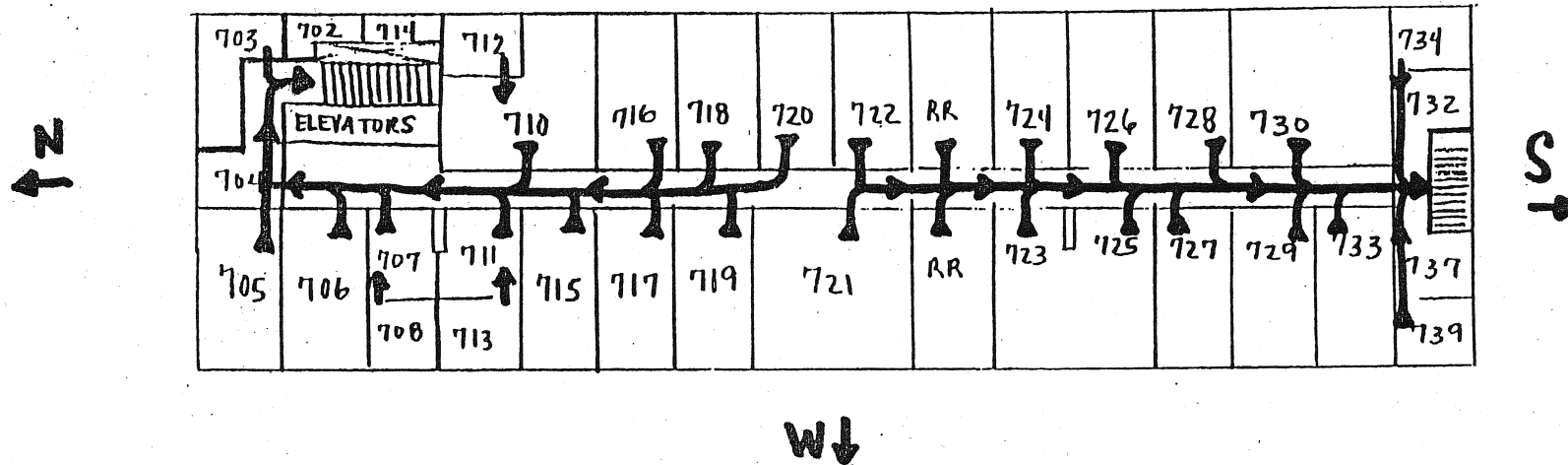


S→

W↓

7th Floor

E↑



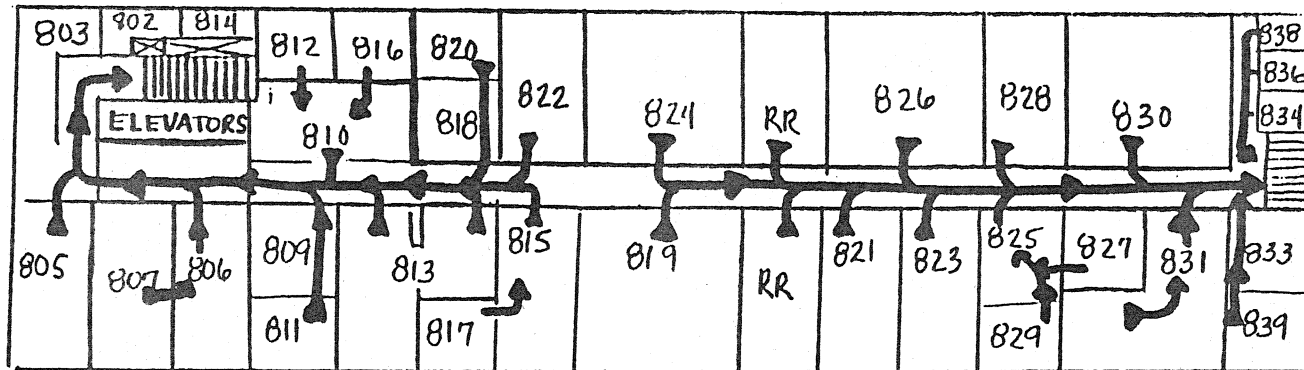
Mississippi Department of Human Services

750 North State St.
Jackson, MS 39205

8th Floor

E↑

N↑



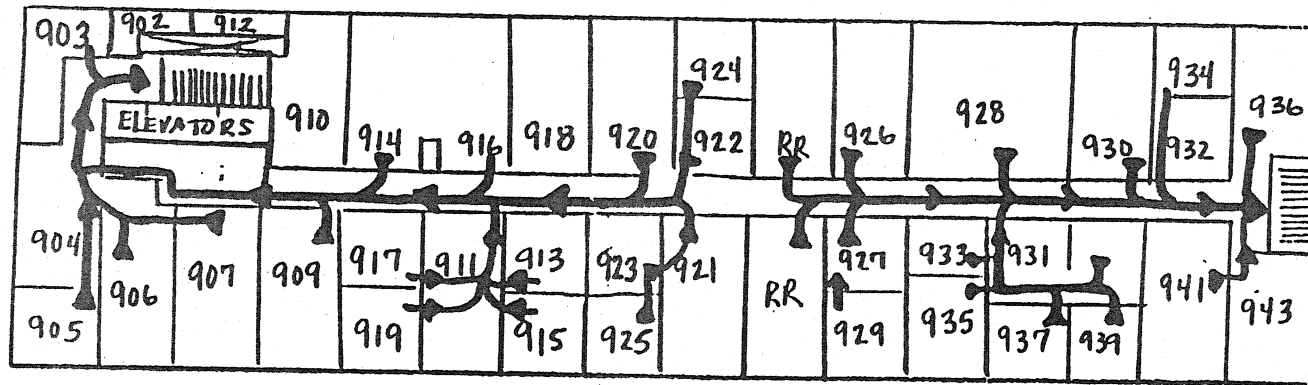
S→

W↓

9th Floor

E↑

N
←



S
→

W
↓