



QR No. 20201211 CTS, Amendment #1

**Amendment #1  
Quote Request No. 20201211 CTS  
RFx 3140002520  
Cubicle Transfer Services**

Amendment to the QR is as follows:

1. Pursuant to the QR Section, Scope of Services, which states to see attached documents, please see attached anticipated layouts and a broad inventory list.

Please acknowledge receipt of Amendment #1 by returning it, along with your quote package, by December 18, 2020, by 3:00 PM, CT. This acknowledgement should be enclosed in your quote package. **Failure to submit this acknowledgement may result in rejection of the quote package.**

\_\_\_\_\_  
Name of Company

\_\_\_\_\_  
Authorized Official's Typed Name/Title

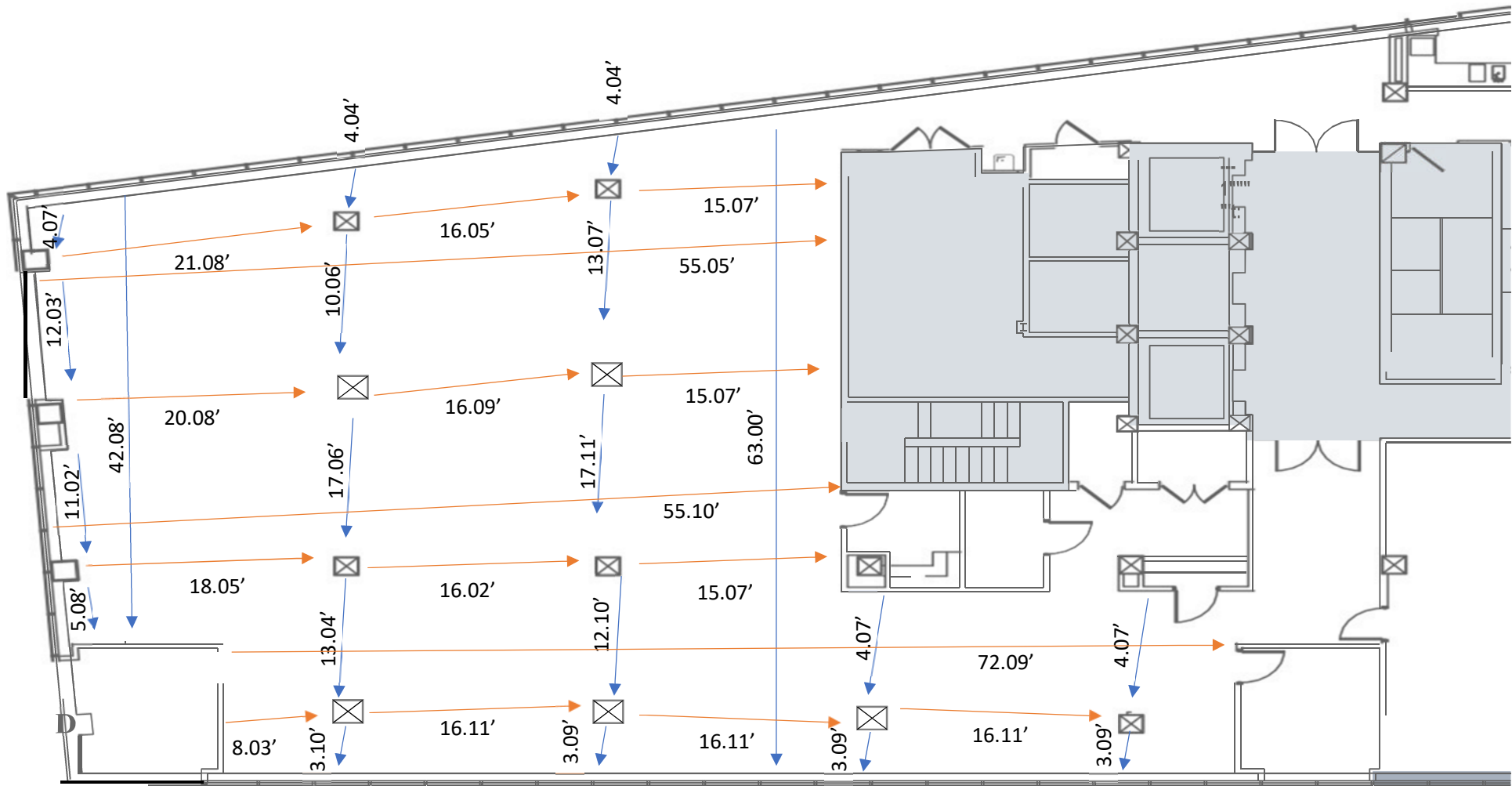
\_\_\_\_\_  
Signature of Authorized Official  
(No stamped signature)

\_\_\_\_\_  
Date

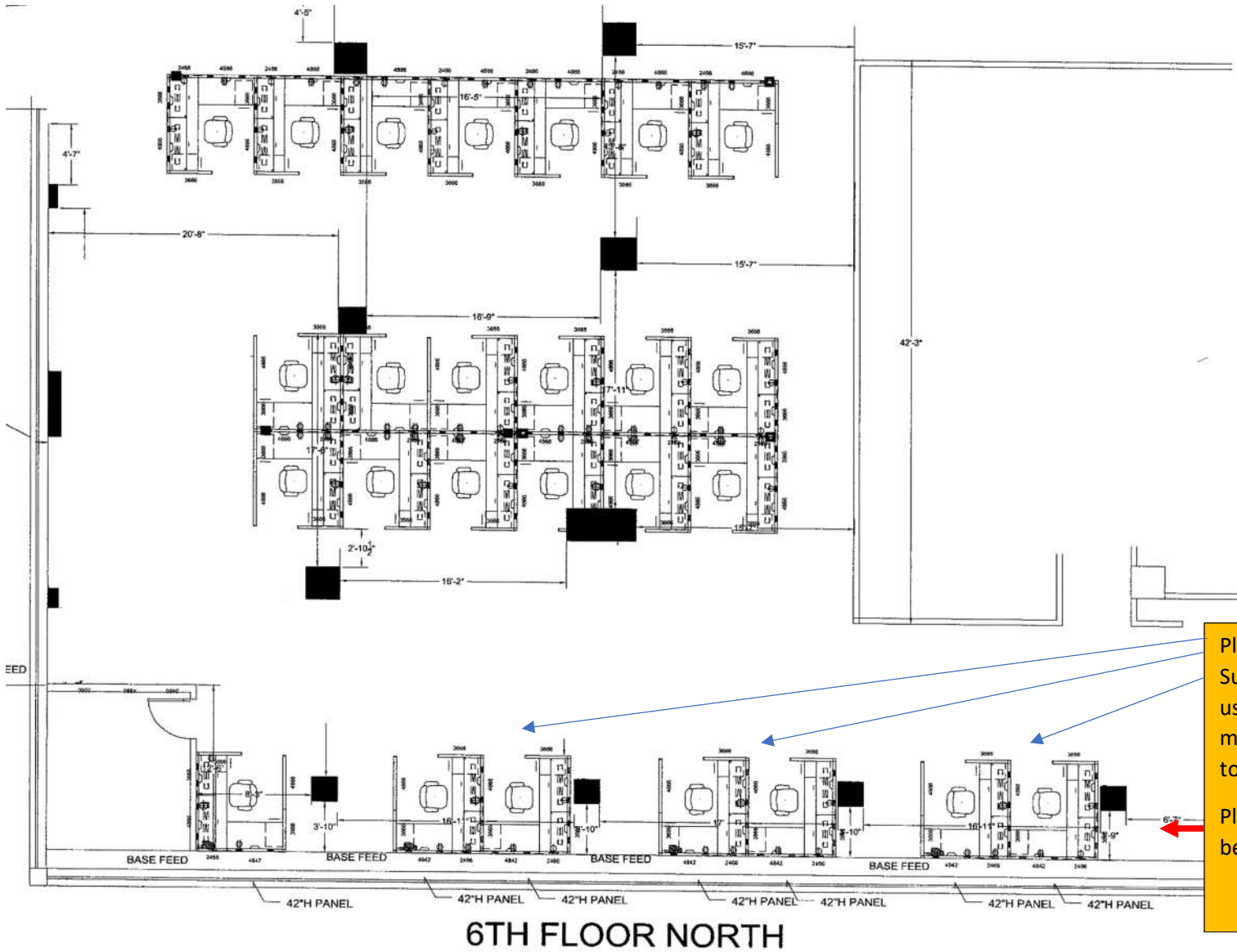
Should an amendment to the QR be issued, it will be posted on the MDHS website ([www.mdhs.ms.gov](http://www.mdhs.ms.gov)) in a manner that all respondents will be able to view. Further, respondents must acknowledge receipt of any amendment to the solicitation by signing and returning the amendment with the quote package, by identifying the amendment number and date in the space provided for this purpose on this form, or by letter. The acknowledgment must be received by MDHS by the time and at the place specified for receipt of quotes. It is the respondent the website for amendments to the QR.

## 6 North Tower – North Side

Need – 20 Cubicles & 3 Double Supervisor Cubicles

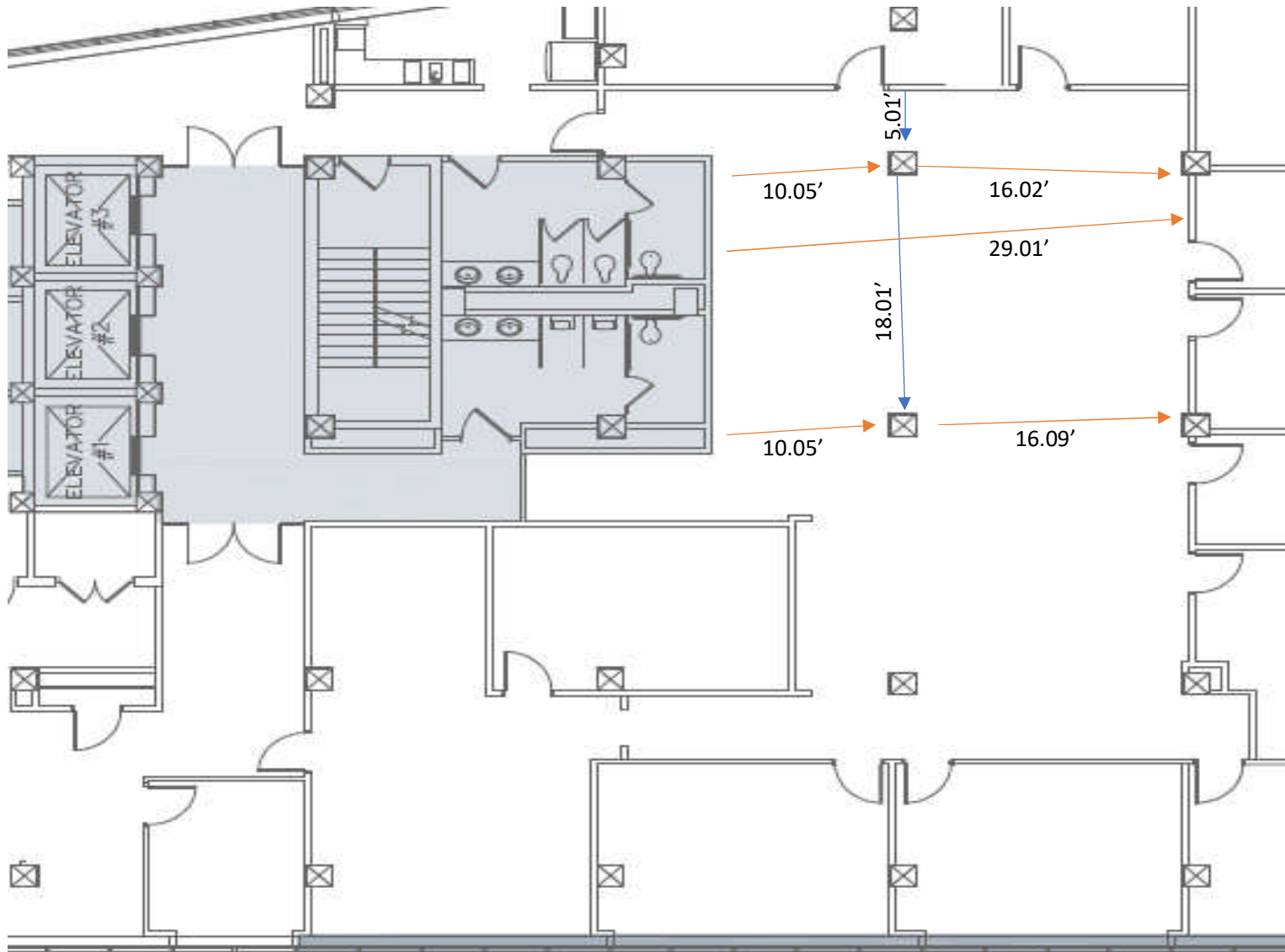


Anticipated Layout on 6 North – North Side – 20 - 6'x7' cubicles and 3 – larger supervisor cubicles

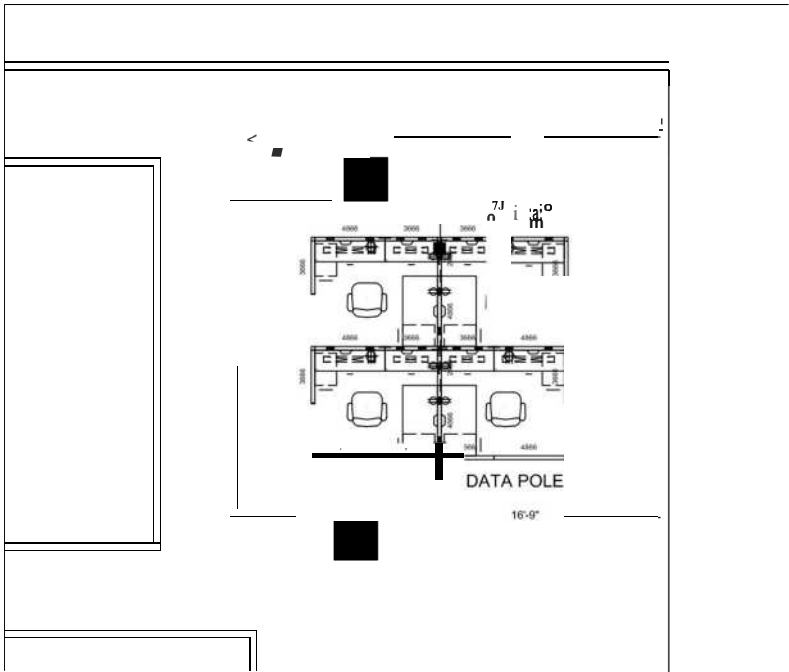


## 6 North Tower – South Side

Need – 4 - Cubicles in this space

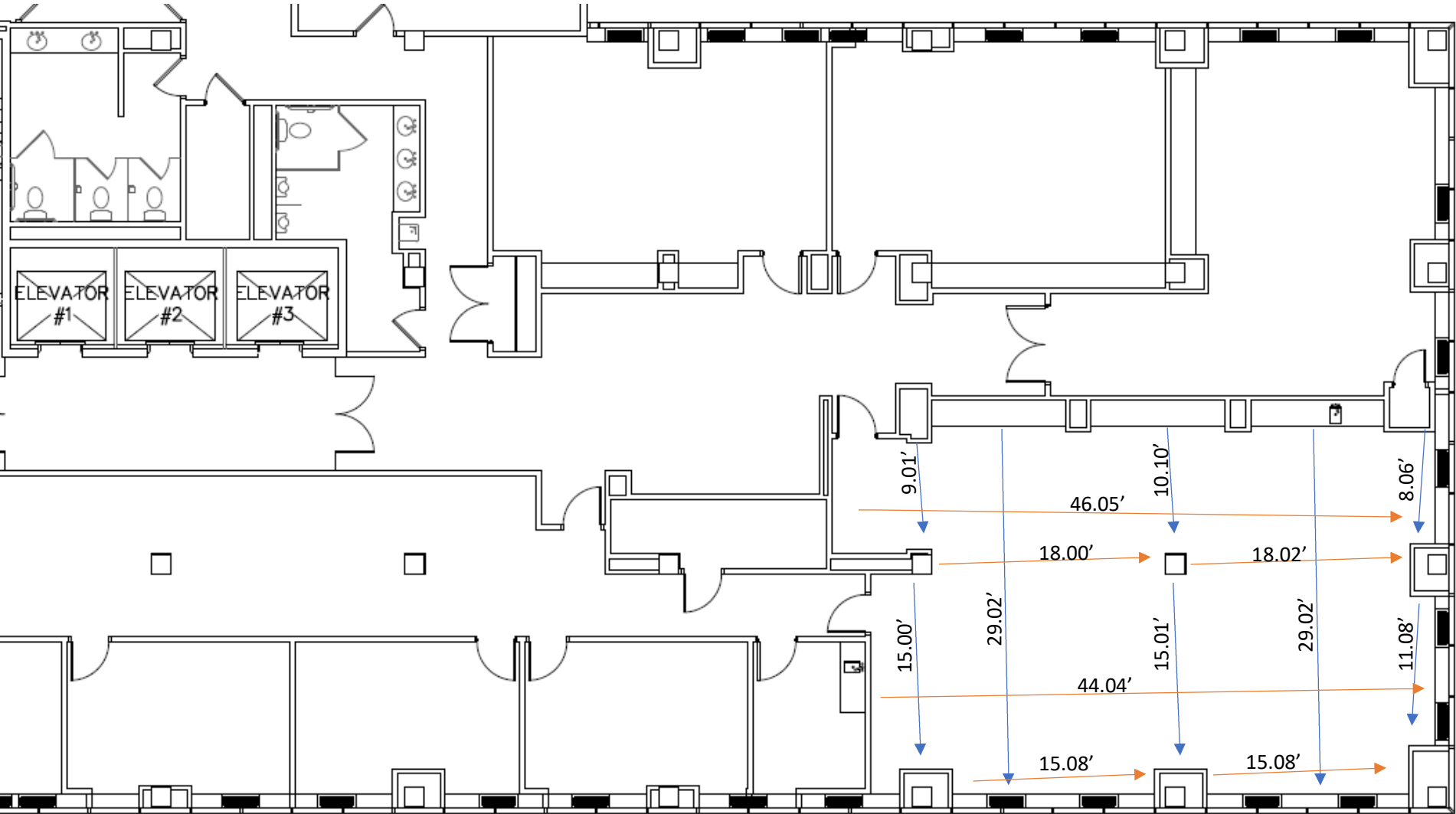


Anticipated Layout on 6 North – South Side – 4 Stations

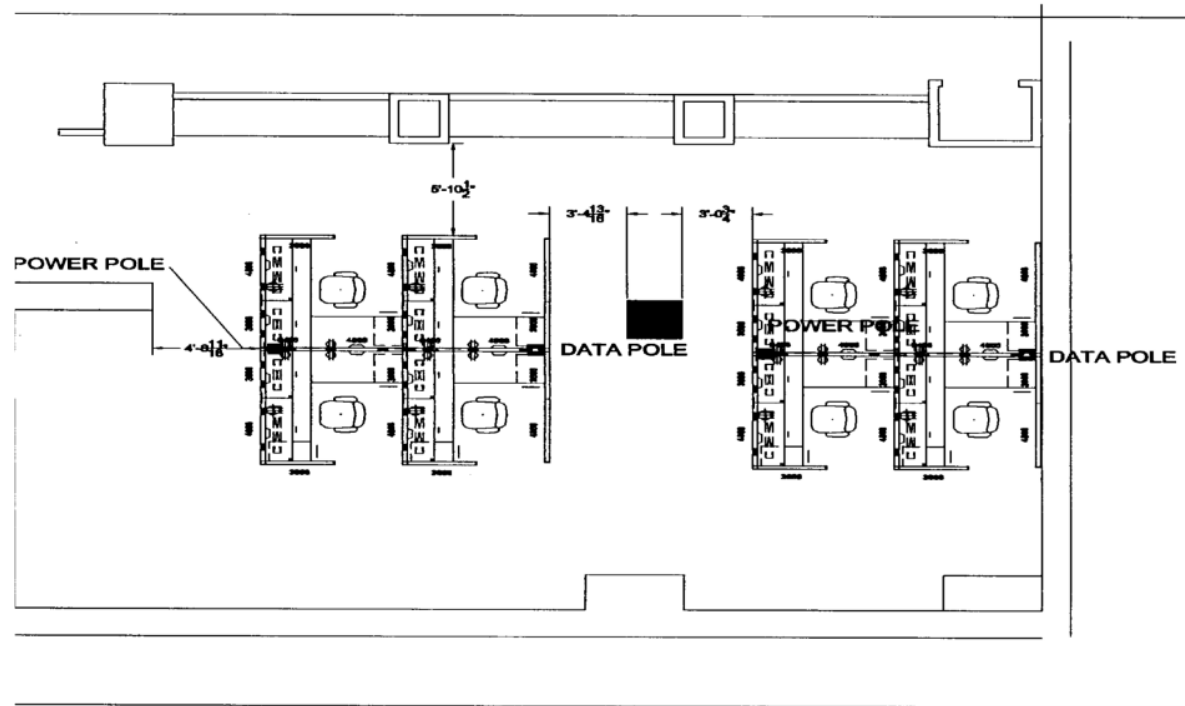


9<sup>th</sup> Floor – South Tower

Need – 8 Cubicles



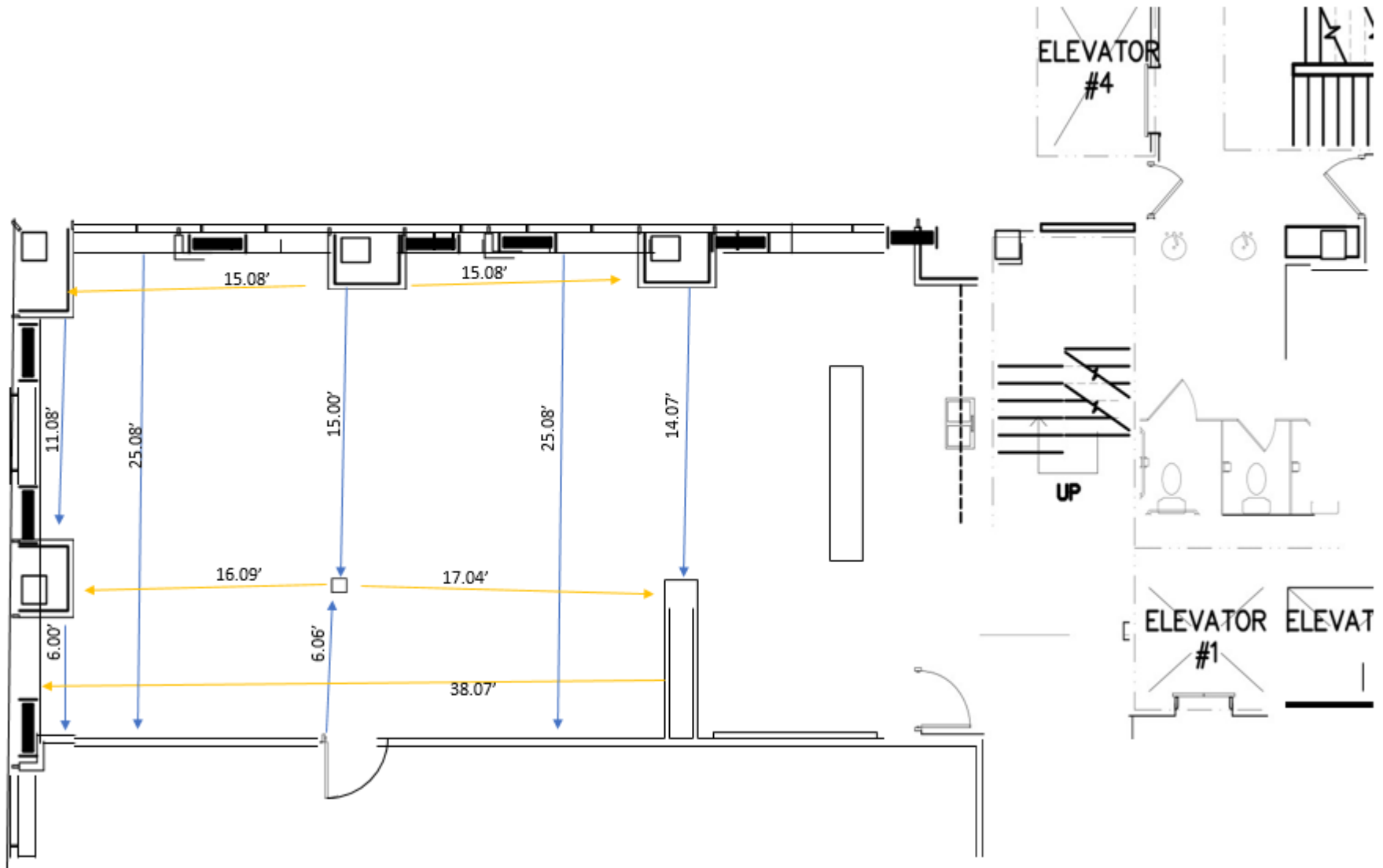
Anticipated Layout on 9 South



**AREA 9 SOUTH  
DRAWING 4  
(8) STATIONS**

### 3<sup>rd</sup> Floor South Tower

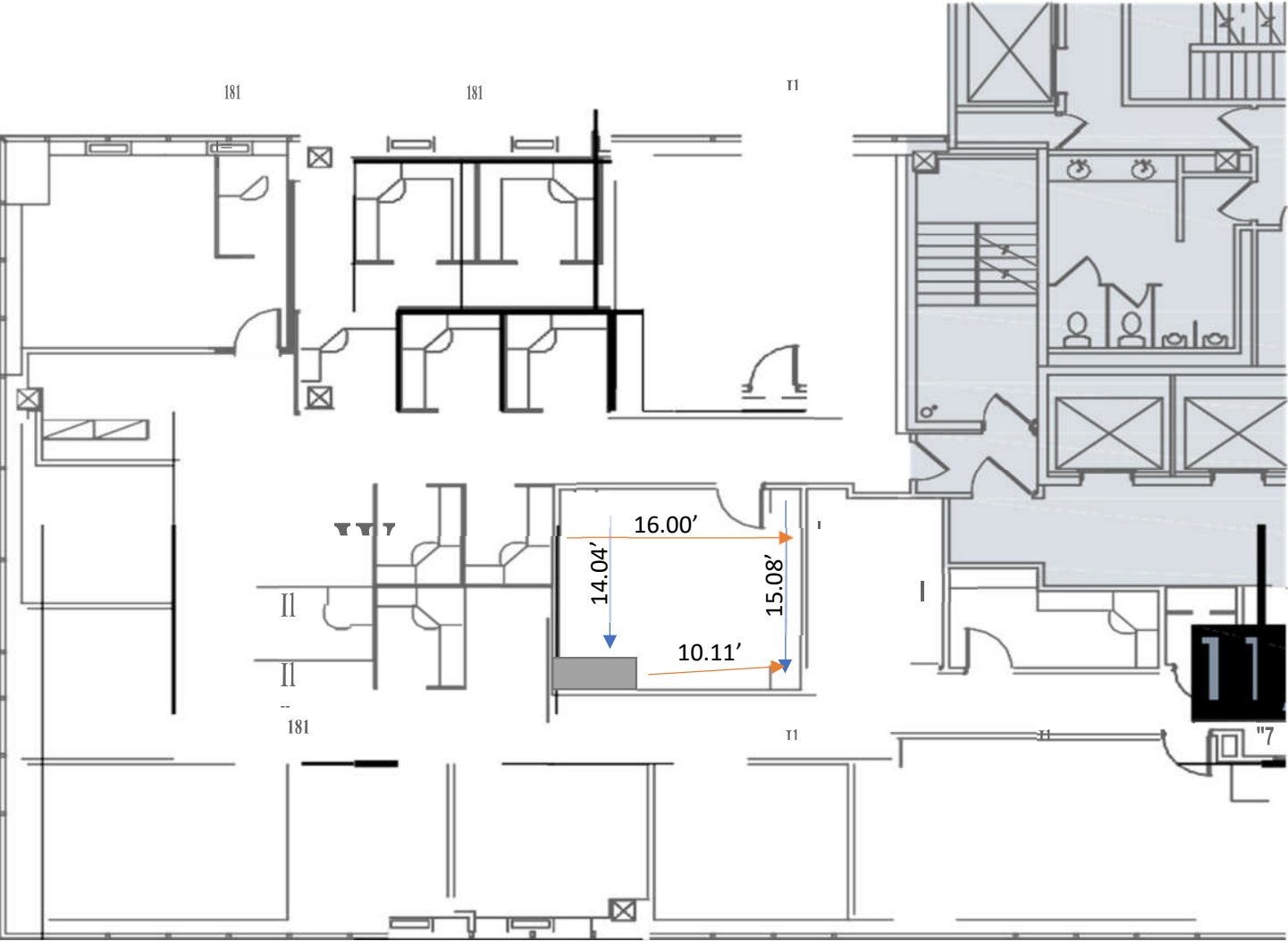
Anticipating 3-4 cubicles and cubicle wall if possible on 3 South as well.  
Do not have a previous drawing of those.



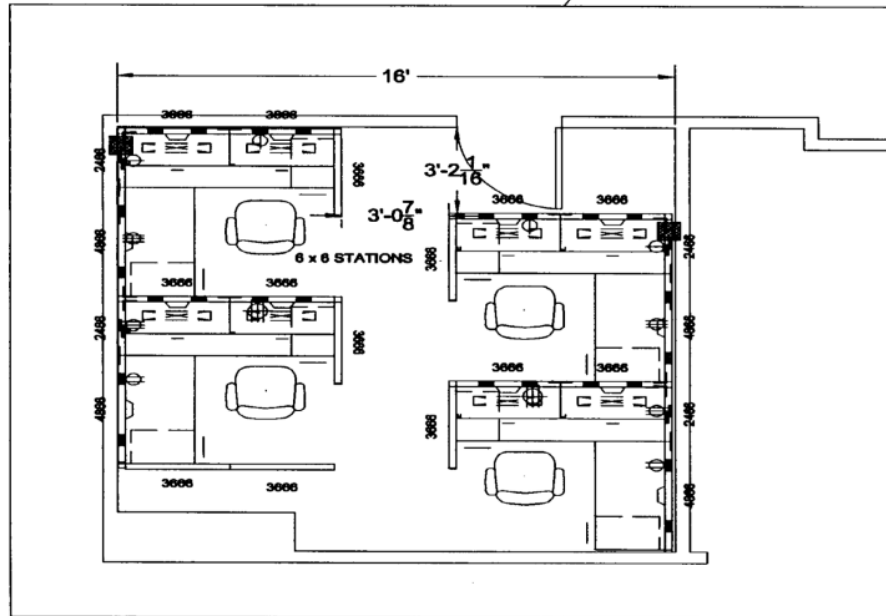


7<sup>th</sup> Floor – South Tower

Need 3 – 4 cubicles

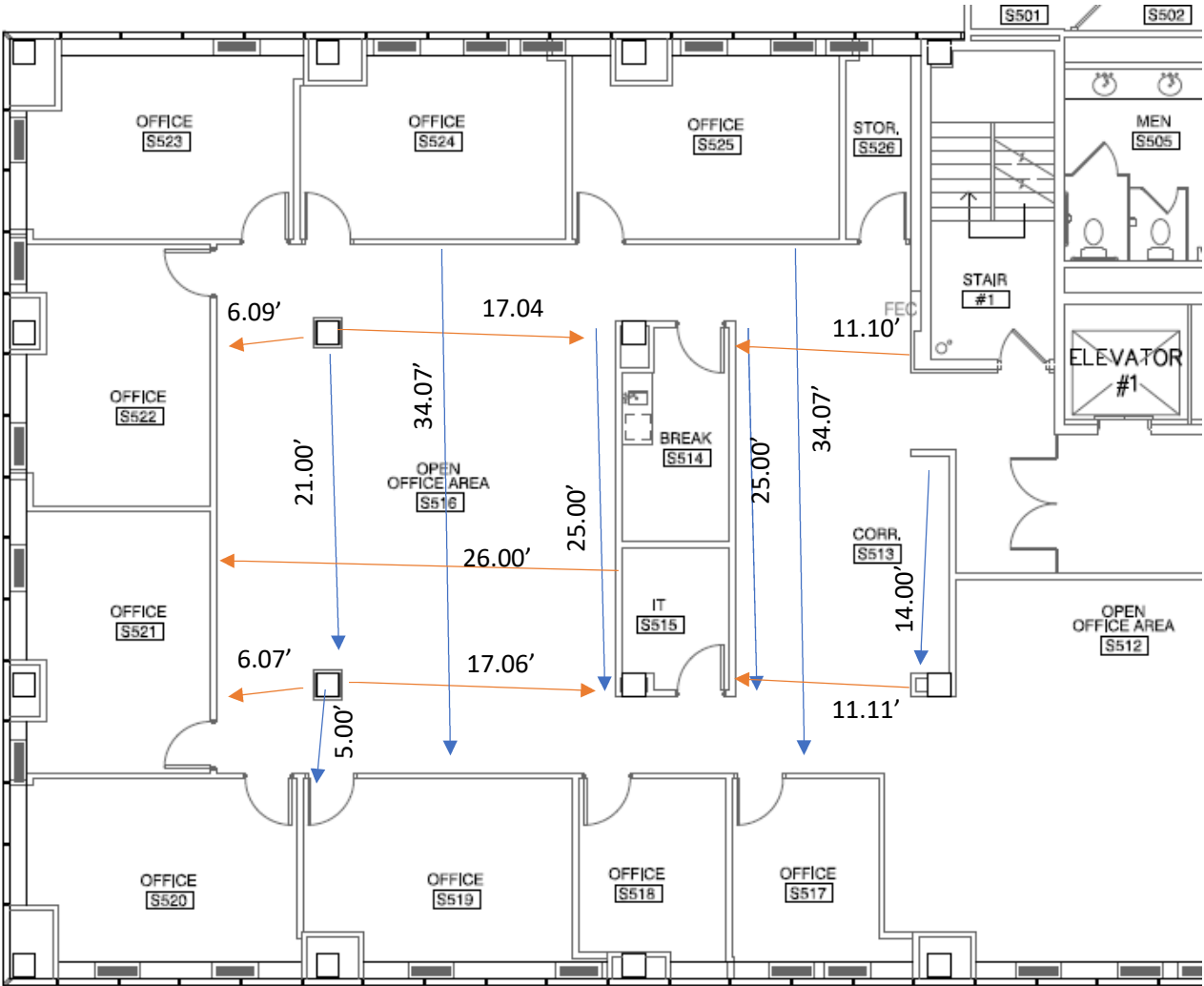


Anticipated Layout on 7 South – 4 Stations



**B & A BRIDGETTE  
DRAWING 5**

Need 12 cubicles

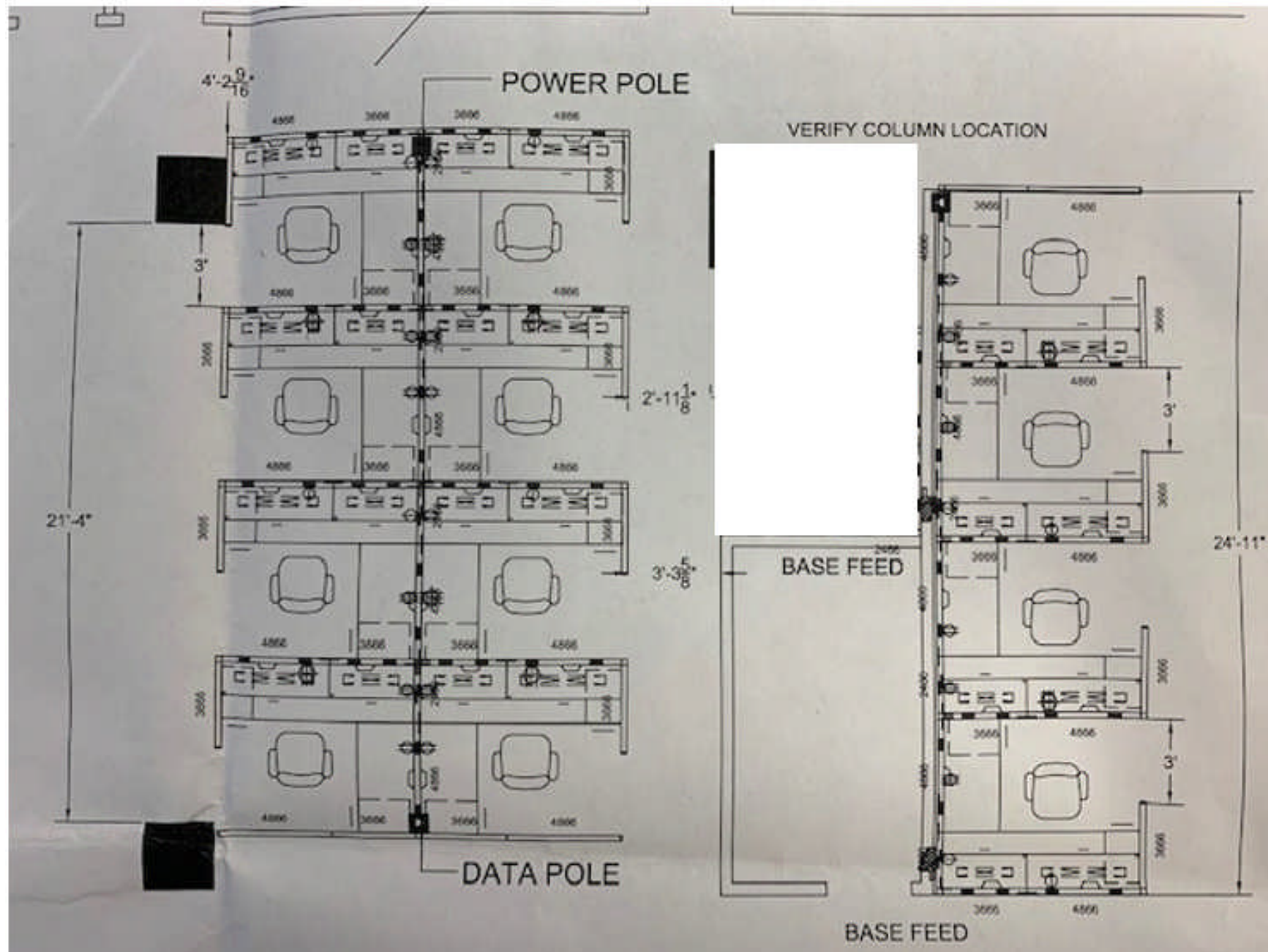


1

Existing Floor Plan Level 5 South

1/8" = 1'-0"

5 South - Anticipated Layout – 12 cubicles





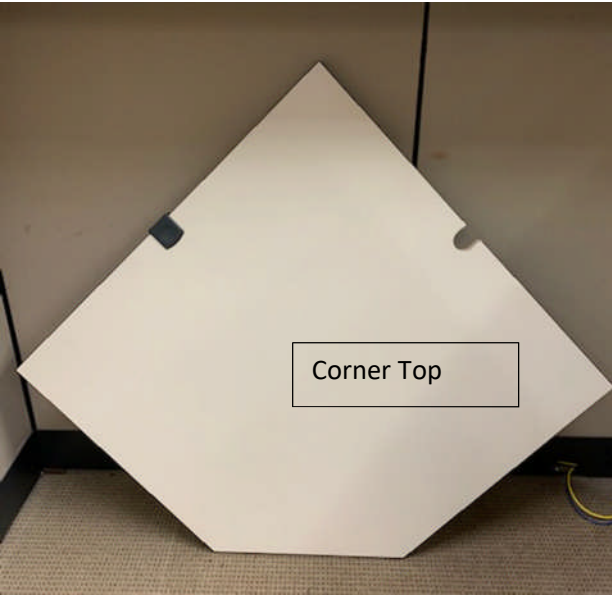
|                        |    |
|------------------------|----|
| 10 <sup>th</sup> Floor | 15 |
| 8 <sup>th</sup> Floor  | 31 |
| 5 <sup>th</sup> Floor  | 11 |
| 4 <sup>th</sup> Floor  | 24 |



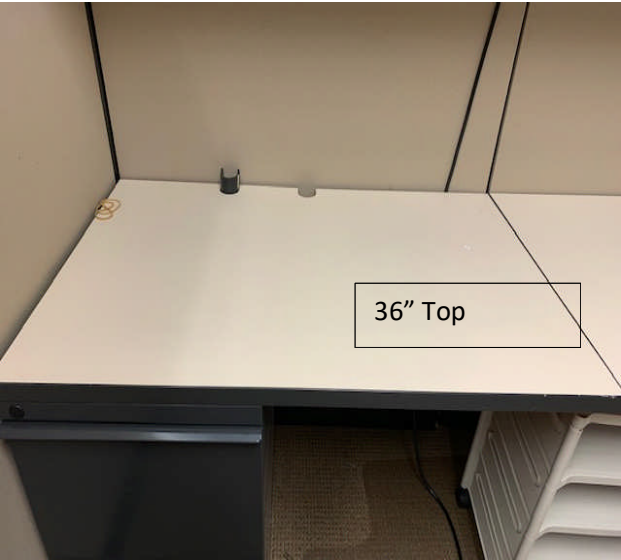
|                        |    |
|------------------------|----|
| 10 <sup>th</sup> Floor | 19 |
| 8 <sup>th</sup> Floor  | 36 |
| 5 <sup>th</sup> Floor  | 12 |
| 4 <sup>th</sup> Floor  | 69 |



|                        |    |
|------------------------|----|
| 10 <sup>th</sup> Floor | 13 |
| 8 <sup>th</sup> Floor  | 20 |
| 5 <sup>th</sup> Floor  | 1  |
| 4 <sup>th</sup> Floor  | 20 |



|                        |    |
|------------------------|----|
| 10 <sup>th</sup> Floor | 3  |
| 8 <sup>th</sup> Floor  | 14 |
| 5 <sup>th</sup> Floor  |    |
| 4 <sup>th</sup> Floor  | 38 |



|                        |    |
|------------------------|----|
| 10 <sup>th</sup> Floor | 4  |
| 8 <sup>th</sup> Floor  | 21 |
| 5 <sup>th</sup> Floor  | 1  |
| 4 <sup>th</sup> Floor  | 32 |



|                        |    |
|------------------------|----|
| 10 <sup>th</sup> Floor | 7  |
| 8 <sup>th</sup> Floor  | 13 |
| 5 <sup>th</sup> Floor  | 0  |
| 4 <sup>th</sup> Floor  | 48 |



|                        |   |
|------------------------|---|
| 10 <sup>th</sup> Floor | 1 |
| 8 <sup>th</sup> Floor  | 4 |
| 5 <sup>th</sup> Floor  |   |
| 4 <sup>th</sup> Floor  |   |

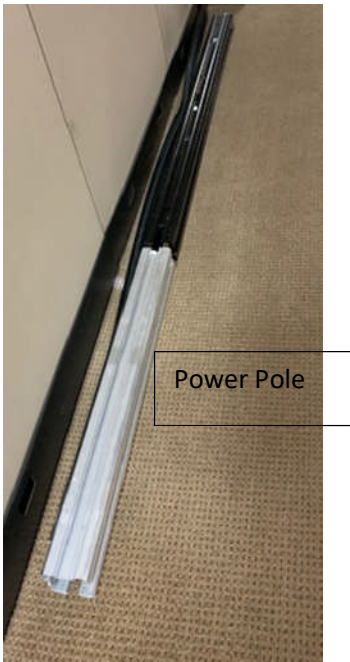


|                        |    |
|------------------------|----|
| 10 <sup>th</sup> Floor | 3  |
| 8 <sup>th</sup> Floor  | 1  |
| 5 <sup>th</sup> Floor  |    |
| 4 <sup>th</sup> Floor  | 14 |



|                        |    |
|------------------------|----|
| 10 <sup>th</sup> Floor |    |
| 8 <sup>th</sup> Floor  | 17 |
| 5 <sup>th</sup> Floor  |    |
| 4 <sup>th</sup> Floor  | 10 |





2 & 3 Drawer Cabinets

|                        |    |
|------------------------|----|
| 10 <sup>th</sup> Floor | 11 |
| 8 <sup>th</sup> Floor  | 41 |
| 5 <sup>th</sup> Floor  |    |
| 4 <sup>th</sup> Floor  | 64 |

|                        |   |
|------------------------|---|
| 10 <sup>th</sup> Floor | 3 |
| 8 <sup>th</sup> Floor  | 3 |
| 5 <sup>th</sup> Floor  |   |
| 4 <sup>th</sup> Floor  | 6 |



|                           |   |
|---------------------------|---|
| 10 <sup>th</sup><br>Floor | 1 |
| 8 <sup>th</sup><br>Floor  |   |
| 5 <sup>th</sup><br>Floor  |   |
| 4 <sup>th</sup><br>Floor  |   |

### City Centre North Tower Cubicle Pieces

| Size/Type   | Qty |
|---|-----|
| 48 inches X 64 inches Panel                               | 54  |
| 36 inches X 64 inches Panel                               | 136 |
| 24 inches X 64 inches Panel                               | 79  |
| Corner Top  | 55  |
| 36" Top   | 58  |
| 48" Top   | 59  |
| 48" Shelve  | 5   |
| 72" Shelve  | 18  |
| 36" Storage Shelve  | 1   |
| 72" Double Storage Shelve                                 | 27  |
| 3 Drawer File Cabinet                                     | 58  |
| 2 Drawer File Cabinet                                     | 58  |
| Power Pole  | 13  |
| several containers of brackets, bolts, power cables, etc. |     |